

Your Mission: Use the F-Response Management Console without a local dongle

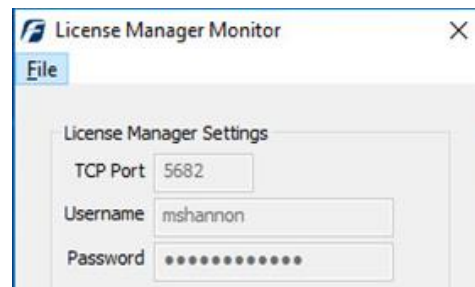


Using the F-Response Management Console in legacy "Accelerator" mode, i.e. without a locally attached dongle.

Step 1: Confirm there is a valid F-Response License Manager on your network

You must have a valid and running F-Response License Manager on your network to use the F-Response Management Console without a dongle.

Be sure to write down the License Manager machine's **network address:port** as this forms the License Manager URI that will be necessary to start the Management Console without a local dongle. You will also need the Username and Password to access remote subject computers where F-Response has been previously deployed and started.



Step 2: Open the F-Response Management Console on a machine without a local F-Response Dongle.

When you open the F-Response Management Console on a machine without a local F-Response dongle you will see the following dialog:



Optional License Manager URI Dialog

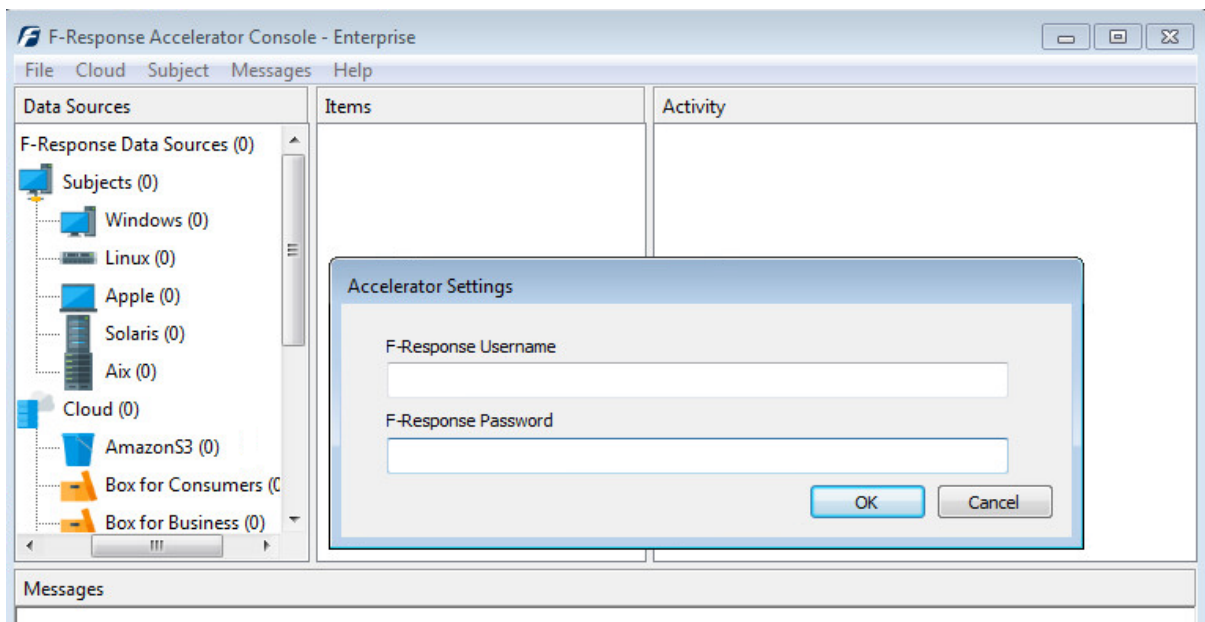
Please input the License Manager URI from Step 1 and press Validate.

Step 3: Configure the Username and Password

Since we do not have a local license manager, we need to tell F-Response the username and password to use when attempting to connect to remote F-Response Subjects. This is accomplished through the Subject->Set Username and Password... menu item.



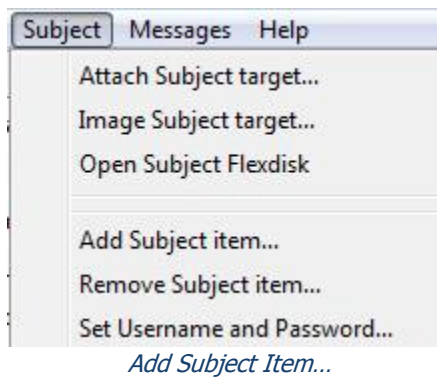
Accelerator Settings Menu

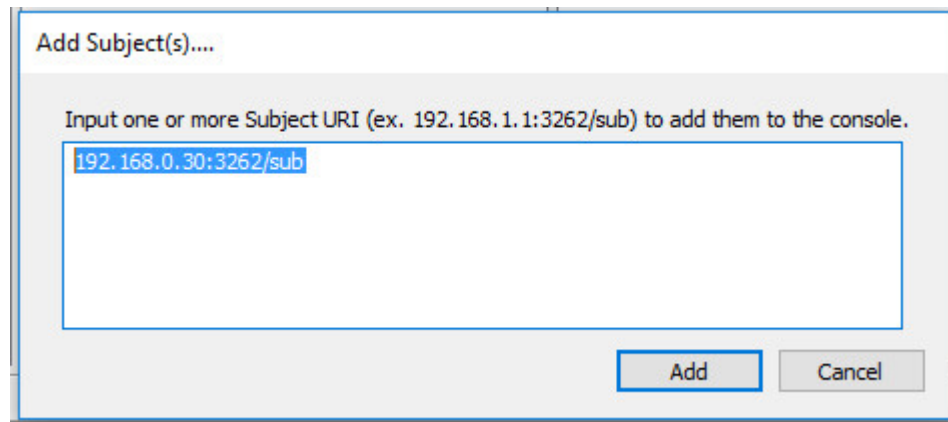


Accelerator Settings Dialog

Step 4: Adding one or more F-Response Subject URIs

Next we need to input one or more F-Response Subject URIs (in the format [IP:F-Response port]) using the Subject->Add Subject Item... menu item.

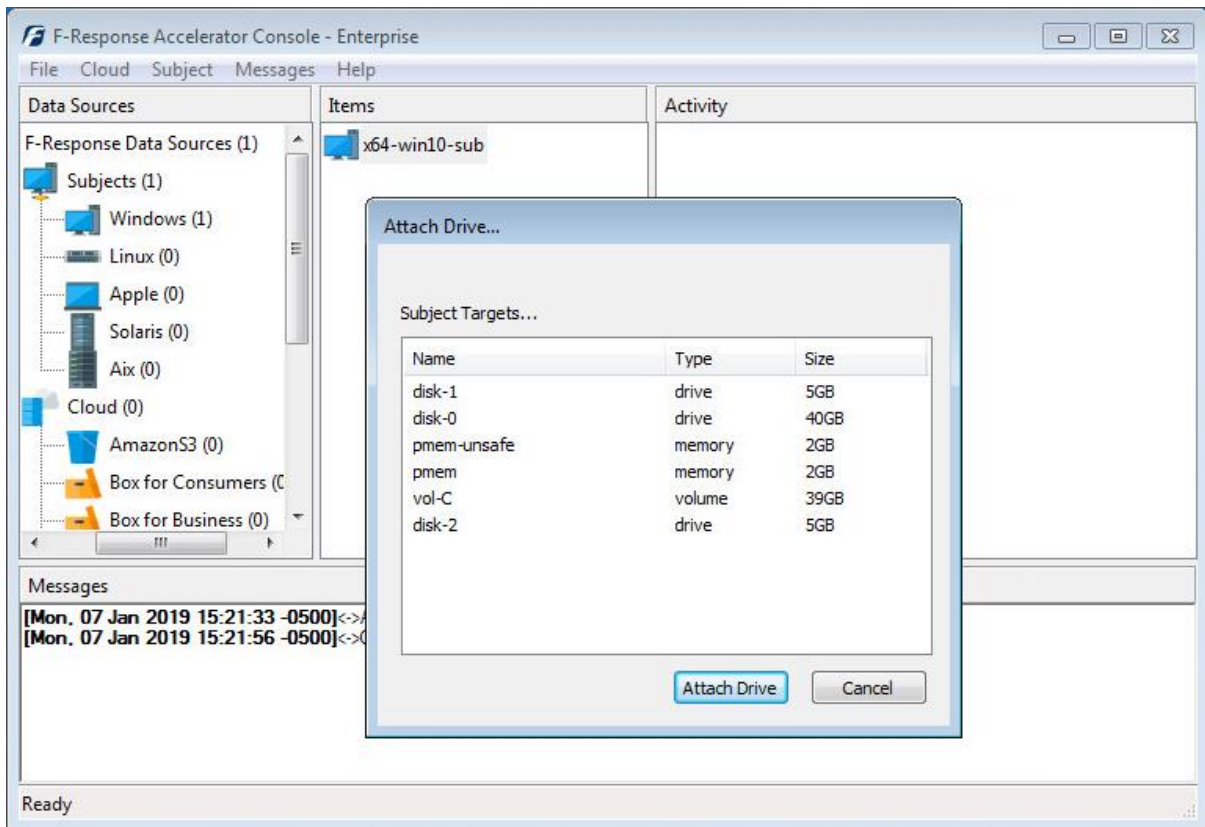




Add Subject(s)... Dialog

Step 5a: List the available targets and attach one or more to your local machine

After successfully deploying F-Response to one or more remote machines you should be able to see those machines by selecting Subjects or a specific platform in the Data Sources panel. The subject entries will appear in the Items panel. Double-Click on any subject to open a dialog for attaching a subject disk, or use the Subject menu for attaching a disk or starting a direct image of one or more subject targets.



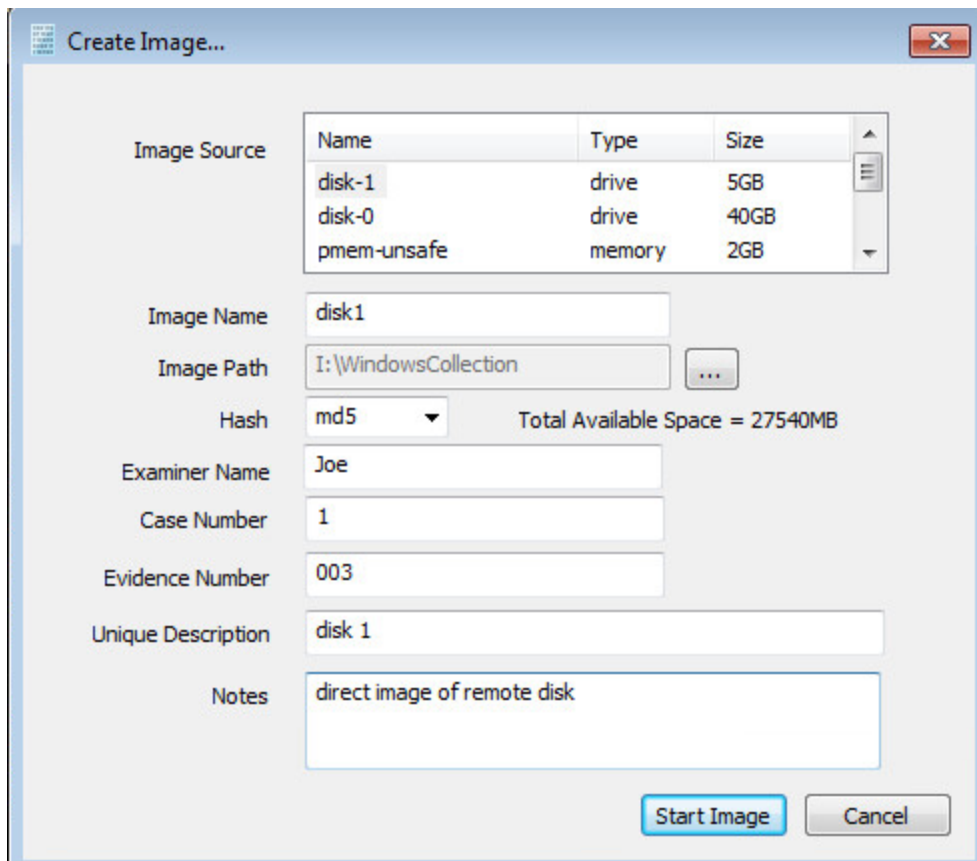
Subject and Targets



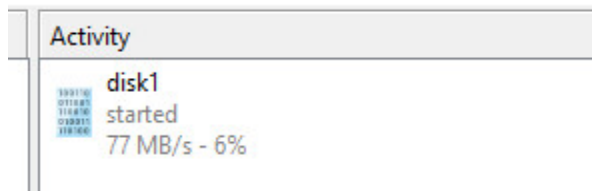
Active Targets

Step 5b: List the available targets and image one or more to your local machine directly(optional)

After successfully deploying F-Response to one or more remote machines you should be able to see those machines by selecting Subjects or a specific platform in the Data Sources panel. The subject entries will appear in the Items panel. Right click on any subject and select Image Subject Target menu option to commence a direct image of one or more subject targets.



Start Imaging Process...



Imaging Activity

Step 6: Detach any connected targets and remove the F-Response Subject from the Console

After successfully detaching any connected targets you must remove the F-Response Subject from the Console. This is done by selecting the Subject and using the Subject->Remove Subject Item... menu item.

