

# Your Mission: Use F-Response to access Rackspace CloudFiles



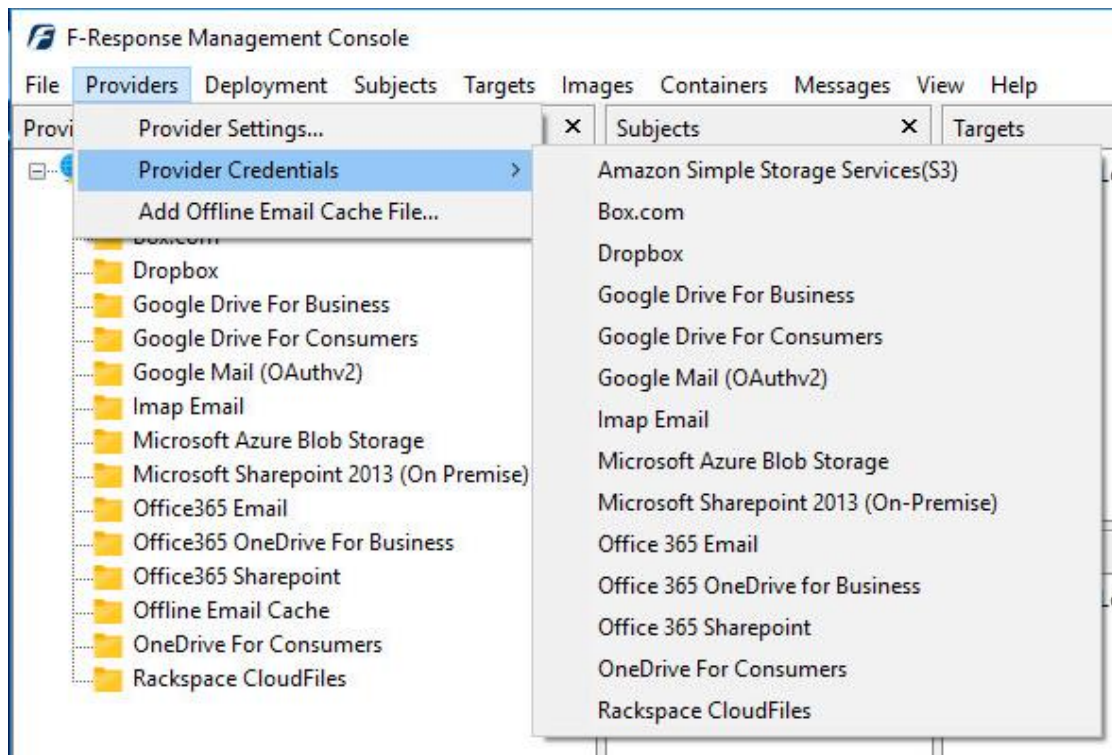
*Using F-Response to connect to Rackspace CloudFiles and collect its contents*

## Important Note

*Disclaimer: F-Response provide access to 3rd party data sources via Application Programming Interfaces (APIs) and internal structures presented by the provider. 3rd party provided data sources by their very nature are volatile. The aforementioned F-Response products provide "best effort" for accessing and interacting with those 3rd party data sources however service disruptions, API changes, provider errors, network errors, as well as other communications issues may result in errors or incomplete data access. F-Response always recommends secondary validation of any 3rd party data collection.*

## Step 1: Open Rackspace CloudFiles Credential Configuration Window

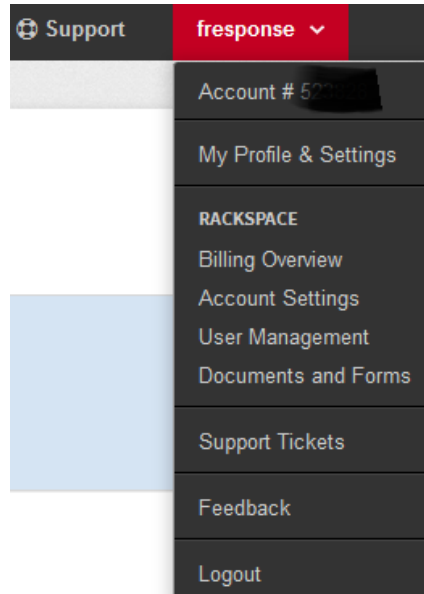
Open the F-Response Management Console and navigate to the Providers->Provider Credentials->Rackspace Cloud Files menu item.



*F-Response Management Console*

## Step 2: Obtain Rackspace CloudFiles Credentials

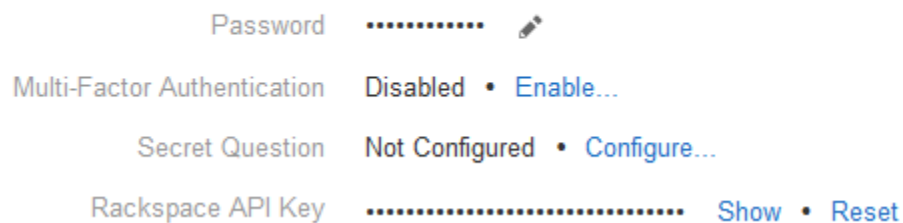
Rackspace CloudFiles Credentials are found on the Rackspace Management Console (see [manage.rackspacecloud.com](https://manage.rackspacecloud.com)). The specific credentials required are available under the “**My Profile and Settings**” menu item for your account, under **Security Settings**, see below:



*Rackspace Cloud Management Console Main Page*

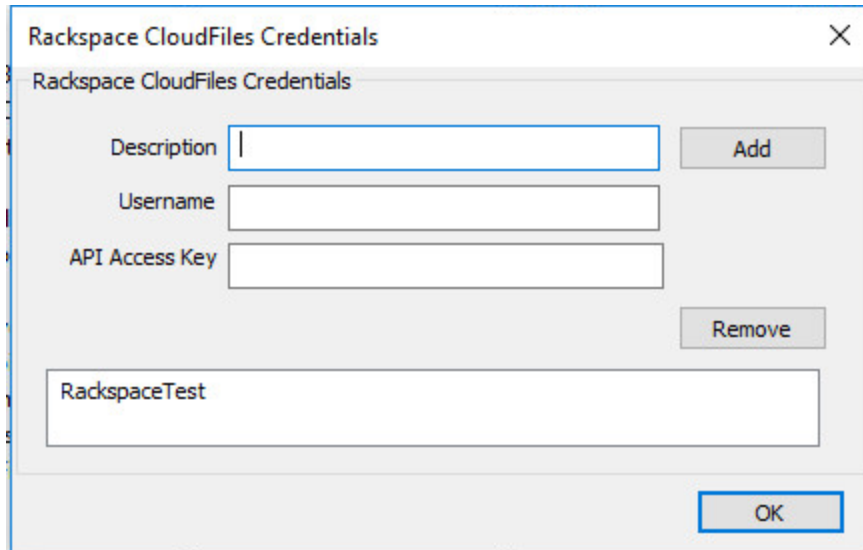
Locate the Rackspace API Key section, then press “**Show Key**” to view the **API Key** and record (copy/paste) the key.

### Security Settings



*Rackspace API Key*

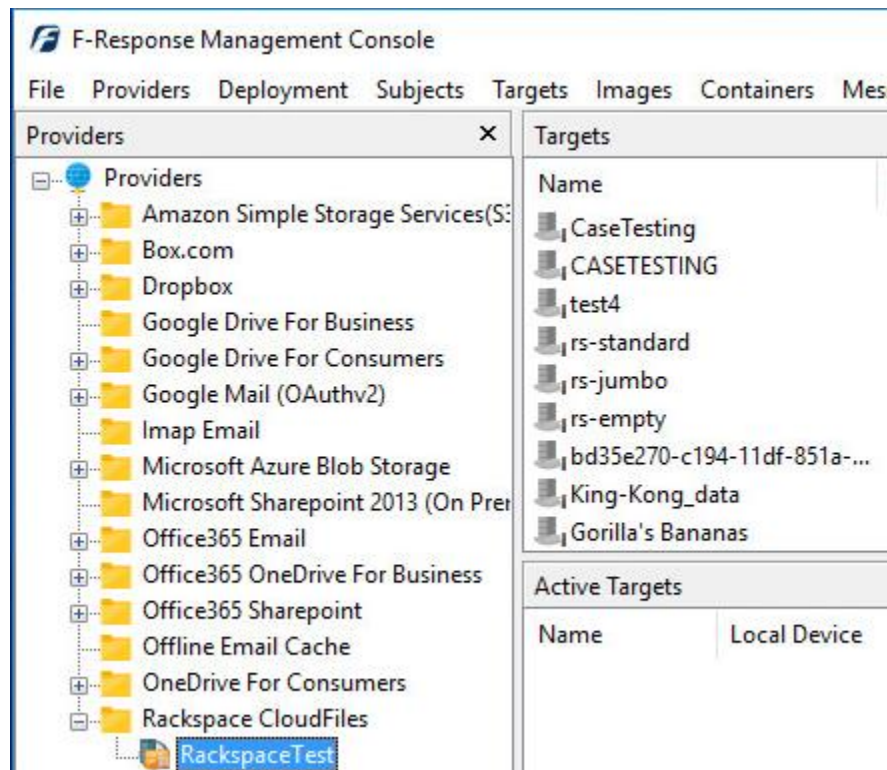
These credentials (Username and API Key) must be entered in the corresponding fields in the **Configure Rackspace CloudFiles Credentials** dialog in the F-Response Management Console. The **Description** field is not optional and can be used to provide a secondary human readable identifier for the credential set (Ex “Client X Account”).



*Credentials Dialog*

### Step 3: Scan and Enumerate Rackspace CloudFiles Targets

Double click on the newly added Rackspace CloudFiles account under the Providers tree. This will scan the provider and result in a listing of available targets in the Targets window.

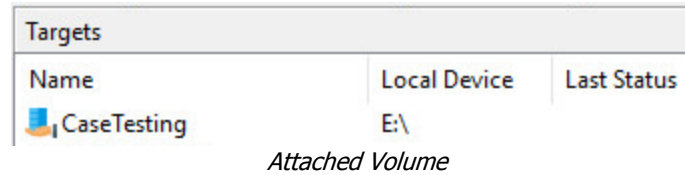


*Listing Targets*

## Step 4: Login and Mount one or more Rackspace CloudFiles Targets

---

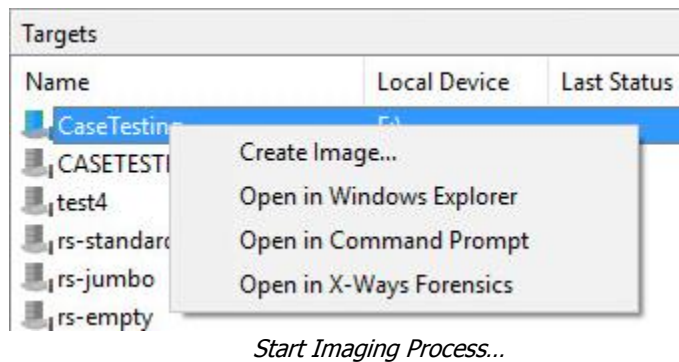
Double click on an individual target in the Targets window to begin the mounting process. Once attached the share will present a drive letter.



## Step 5: Create Image of attached volume

---

Select the newly attached target and right click on the Local Device column. Use the "Create Image..." option to open the "Image" dialog to begin imaging the device.



## Step 6: Complete Imaging Options...

Image Physical or Virtual Device

Source Type  Physical (Includes Unallocated Space)  
 Virtual (Files and Folder Contents Only)

Format E01

Image Source (E:)\X64-WIN10\CaseTesting

Image Name RackspaceCloudFiles

Image Path M:\ ...

Hash Both Total Available Space = 10193MB

Compression None

Examiner Name Joe Examiner

Case Number #2786

Evidence Number 0134

Unique Description Suspect's Rackspace CloudFiles\Account

Notes Full image of virtual device, contains Files only.

Start Image Cancel

We'll work through this window from the top down. First, the **Source Type** is set to **Virtual** (by default) to be able to create an image of the connected virtual device data.

Next you can select the image **Format**—you have a choice **E01** (Expert Witness), **VHD** (Virtual Hard Disk), or **Both**. This option determines what the Imager will provide at the end of the collection.

**Image Source** should be populated if we opened this window

from Windows Explorer, just verify the drive letter is correct from Step 1. For **Image Path** we need to choose our destination drive—this must be a physical drive attached to our examiner machine (we cannot image to a network share).

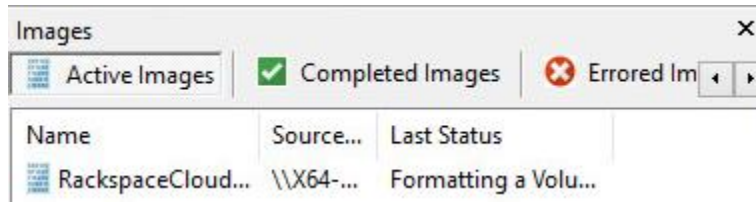
Next we can choose a **Hash** format and the **Compression** level if you wish to compress the resulting image file. The remaining fields are specific to your case and can be filled out accordingly. These fields will be included in the resulting log file for the image.

Once you have all your information entered simply click the **Start Image** button to begin the process.

## Step 7: Review the Image

---

Once started the dialog will close and you'll be able to monitor the image using the Active Images. When the Image completes you will see it move to Completed Images.

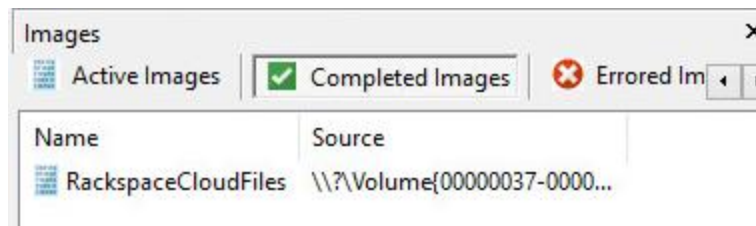


*Imaging started and running..*

## Step 8: Review the Completed Image

---

Right click on the completed image to access the Image Path, Log, and File List. These logs and listing contain details about the image, the image itself, and a file listing of files collected.



*Reviewing the completed image.*

## Troubleshooting

---