

# Your Mission: Use F-Response to access Microsoft Azure Blob Storage



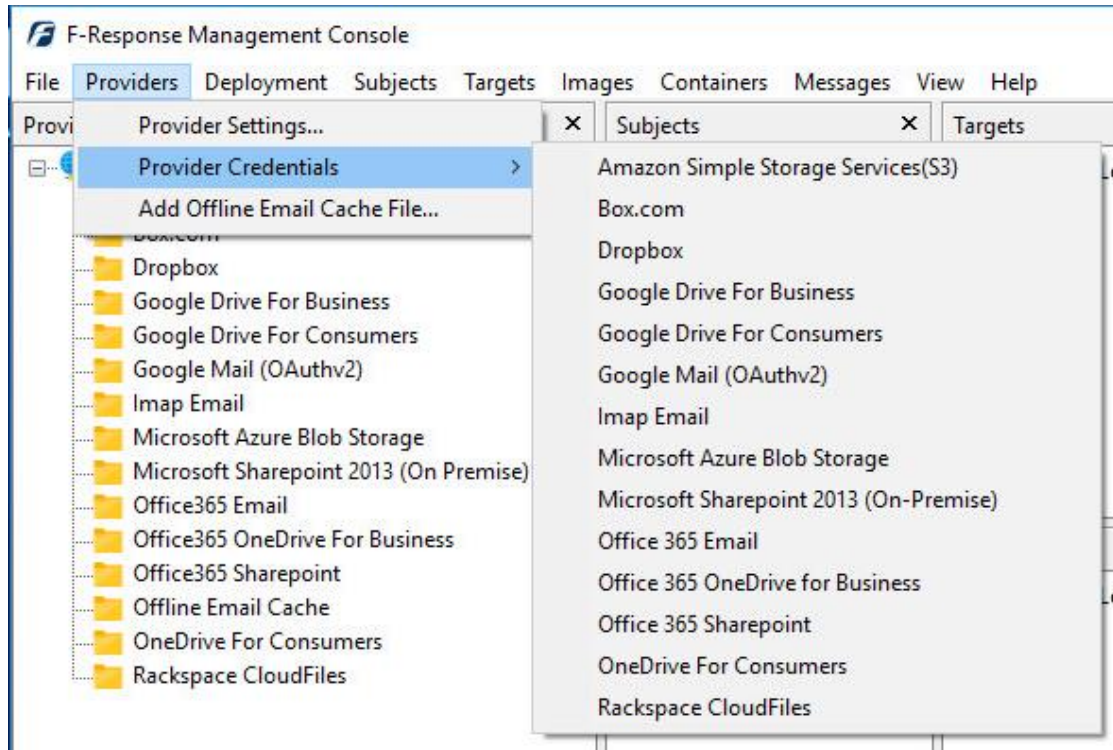
**Using F-Response to connect to Microsoft Azure Blob Storage and collect its contents**

## Important Note

*Disclaimer: F-Response provide access to 3rd party data sources via Application Programming Interfaces (APIs) and internal structures presented by the provider. 3rd party provided data sources by their very nature are volatile. The aforementioned F-Response products provide "best effort" for accessing and interacting with those 3rd party data sources however service disruptions, API changes, provider errors, network errors, as well as other communications issues may result in errors or incomplete data access. F-Response always recommends secondary validation of any 3rd party data collection.*

## Step 1: Open Microsoft Azure Blob Storage Credential Configuration Window

Open the F-Response Management Console and navigate to the Providers->Provider Credentials->Microsoft Azure Blob Storage menu item.

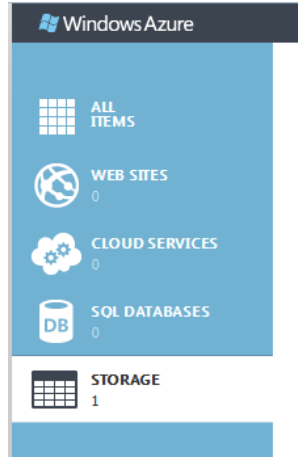


F-Response Management Console

## Step 2: Obtain Azure Credentials

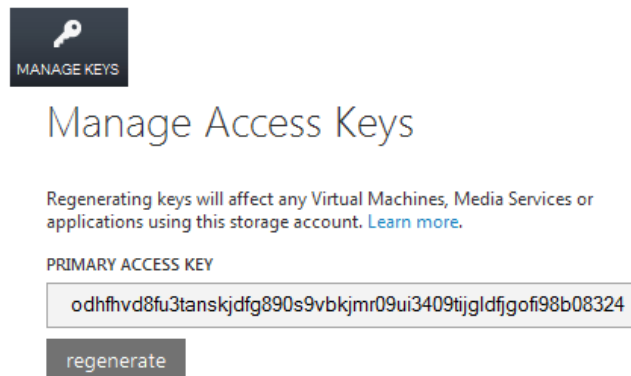
---

Windows Azure Storage Credentials are found on the Windows Azure Storage Portal (see [www.windowsazure.com](http://www.windowsazure.com)). The specific credentials required are available under the “**Manage Keys**” link under **Storage**, see below:



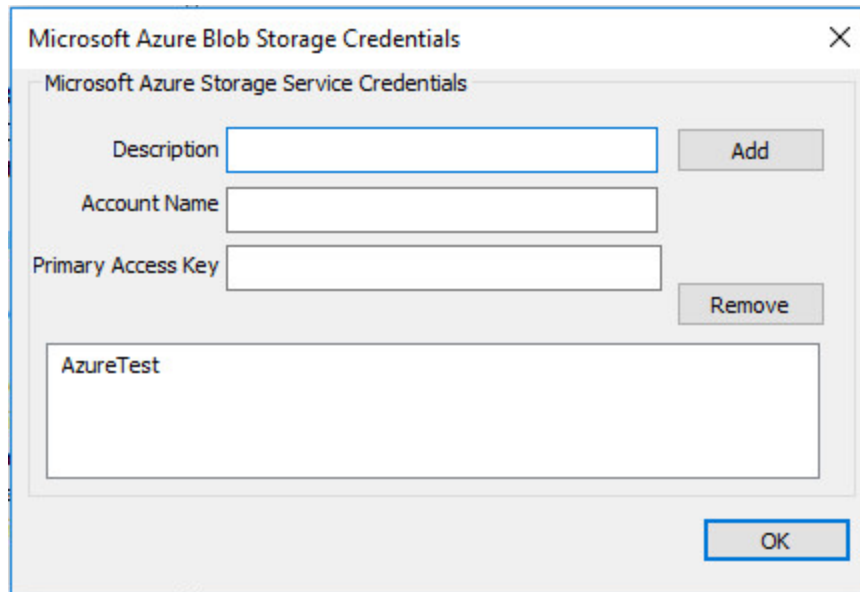
*Windows Azure Storage Accounts Menu Item*

Locate the **Manage Keys** button at the bottom of the page and press it to show the primary and secondary access key, record (copy/paste) **Primary Access Key ID**.



*Windows Azure Primary Access Key*

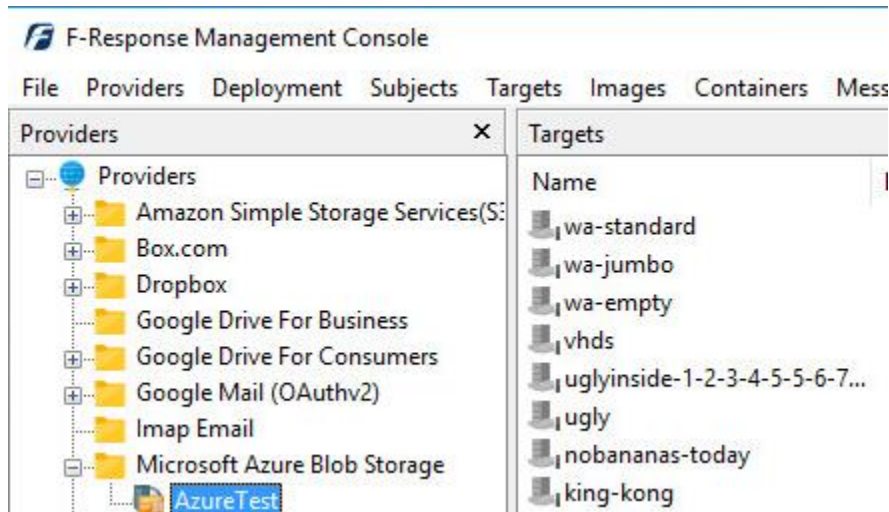
The preceding credentials (Storage Account name and Primary Access Key) must be entered in the corresponding fields in the **Configure Microsoft Windows Azure Credentials** dialog. The Description field is not optional and must be used to provide a secondary human readable identifier for the credential set (Ex “Client X Account”).



*Credentials Dialog*

## Step 3: Scan and Enumerate Azure Blob Storage Targets

Double click on the newly added Microsoft Azure Blob Storage account under the Providers tree. This will scan the provider and result in a listing of available targets in the Targets window.

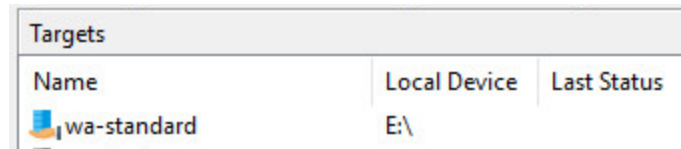


*Listing Targets*

## Step 4: Login and Mount one or more Microsoft Azure Blob Storage Targets

---

Double click on an individual target in the Targets window to begin the mounting process. Once attached the share will present a drive letter.

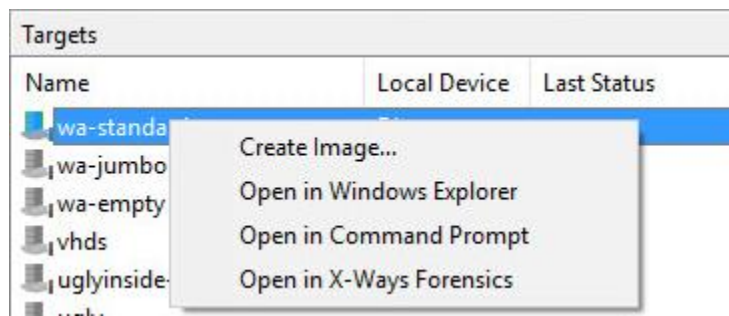


*Attached Volume*

## Step 5: Create Image of attached volume

---

Select the newly attached target and right click on the Local Device column. Use the "Create Image..." option to open the "Image" dialog to begin imaging the device.



*Start Imaging Process...*

## Step 6: Complete Imaging Options...

Image Physical or Virtual Device

Source Type  Physical (Includes Unallocated Space)  
 Virtual (Files and Folder Contents Only)

Format E01

Image Source (E:)\X64-WIN10\wa-standard

Image Name AzureBlobStorageFiles

Image Path M:\ ...

Hash Both Total Available Space = 10193MB

Compression None

Examiner Name Joe Examiner

Case Number #2786

Evidence Number 0134

Unique Description Suspect's Azure Blob Storage Account

Notes Full image of virtual device, contains Files only.

Start Image Cancel

We'll work through this window from the top down. First, the **Source Type** is set to **Virtual** (by default) to be able to create an image of the connected virtual device data.

Next you can select the image **Format**—you have a choice **E01** (Expert Witness), **VHD** (Virtual Hard Disk), or **Both**. This option determines what the Imager will provide at the end of the collection.

**Image Source** should be populated if we opened this window

from Windows Explorer, just verify the drive letter is correct from Step 1. For **Image Path** we need to choose our destination drive—this must be a physical drive attached to our examiner machine (we cannot image to a network share).

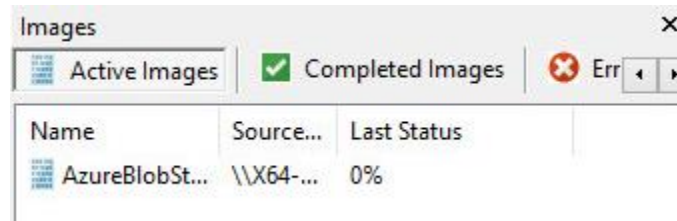
Next we can choose a **Hash** format and the **Compression** level if you wish to compress the resulting image file. The remaining fields are specific to your case and can be filled out accordingly. These fields will be included in the resulting log file for the image.

Once you have all your information entered simply click the **Start Image** button to begin the process.

## Step 7: Review the Image

---

Once started the dialog will close and you'll be able to monitor the image using the Active Images. When the Image completes you will see it move to Completed Images.

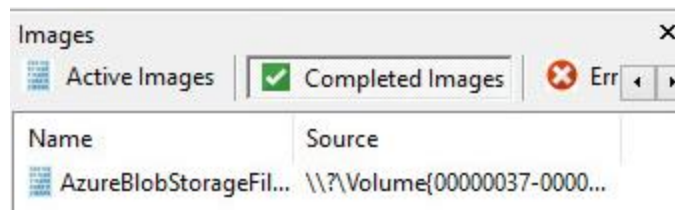


*Imaging started and running...*

## Step 8: Review the Completed Image

---

Right click on the completed image to access the Image Path, Log, and File List. These logs and listings contain details about the image, the image itself, and a file listing of files collected.



*Reviewing the completed image.*

## Troubleshooting

---