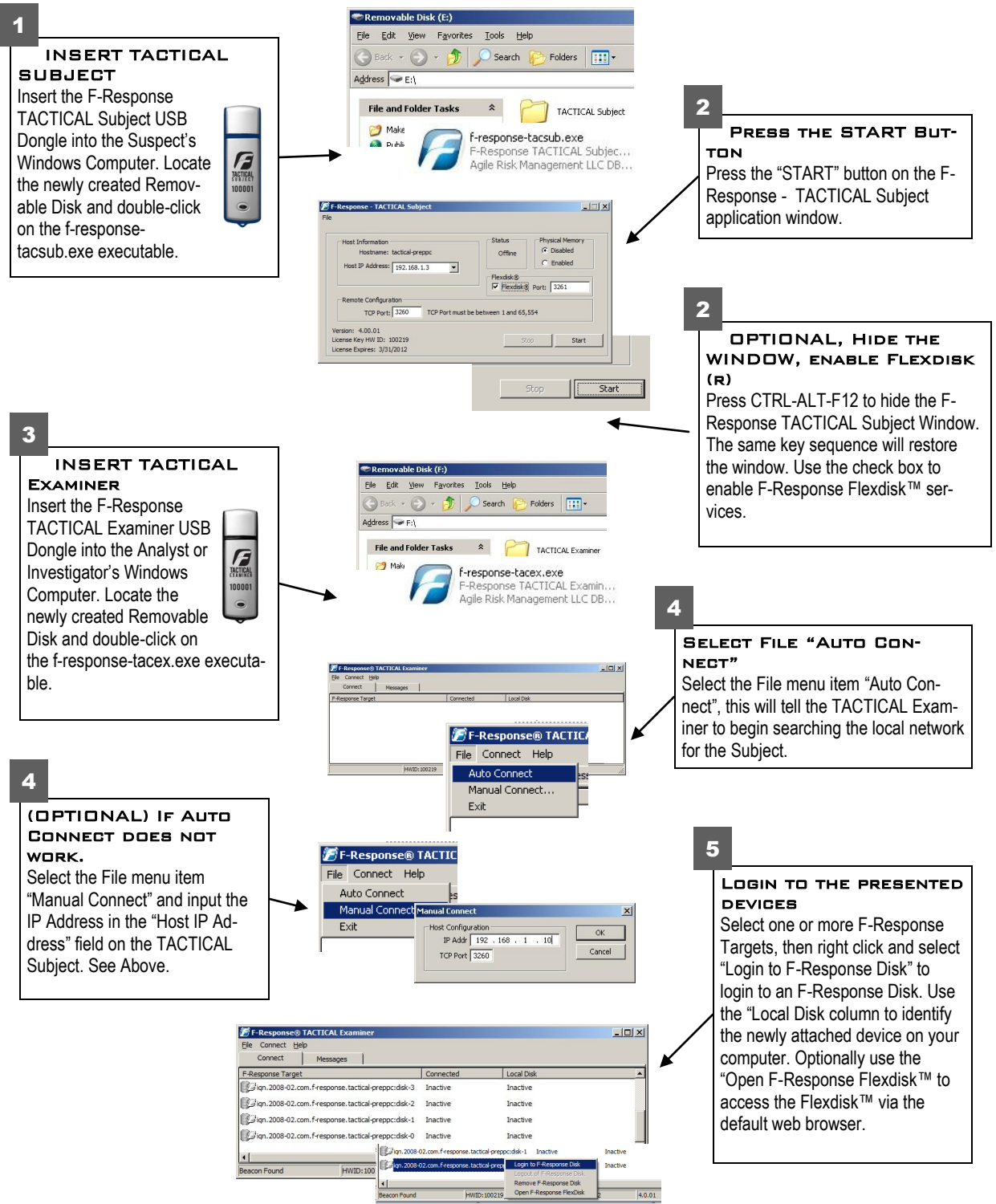


USING F-RESPONSE TACTICAL FOR WINDOWS

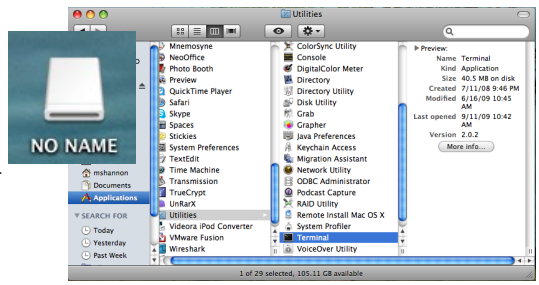


USING F-RESPONSE TACTICAL FOR APPLE OSX (MANUAL METHOD)

1

INSERT TACTICAL SUBJECT

Insert the F-Response TACTICAL Subject USB Dongle into the Suspect's Apple OSX Computer. Locate the newly created Removable Disk and open



```
Terminal — sudo — 80x24
Last login: Tue Oct 27 13:08:59 on ttys000
new-host-2:~ mshannon$ cd /Volumes/NO\ NAME/TACTICAL\ Subject/
new-host-2:TACTICAL Subject mshannon$ sudo ./f-response-tacsub-osx
Password:
F-Response TACTICAL Subject (Apple OS X Edition) Version 3.09.05
F-Response Disk: /dev/rdisk0 (312581808 sectors, 512 sector size)
152627 MB write blocked storage on F-Response Disk:rdisk0
F-Response Disk: /dev/rdisk1 (3891200 sectors, 512 sector size)
1900 MB write blocked storage on F-Response Disk:rdisk1
```

2

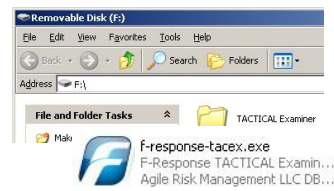
NAVIGATE TO THE USB STORAGE DEVICE AND EXECUTE THE PROGRAM

Navigate to the folder containing the F-Response TACTICAL Subject for OSX (f-response-tacsub-osx), in this instance that folder is /Volumes/NO NAME. Next execute the program as root or using sudo. (admin or account password will be required). The command line is "sudo ./f-response-tacsub-osx".

3

INSERT TACTICAL EXAMINER

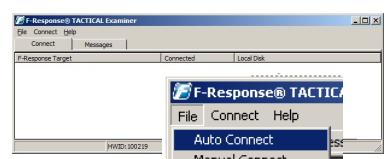
Insert the F-Response TACTICAL Examiner USB Dongle into the Analyst or Investigator's Windows Computer. Locate the newly created Removable Disk and double-click on the f-response-tacex.exe executable.



4

SELECT FILE "AUTO CONNECT"

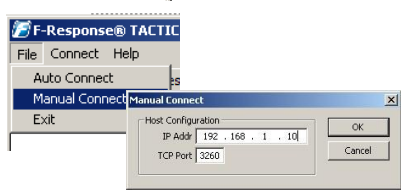
Select the File menu item "Auto Connect", this will tell the TACTICAL Examiner to begin searching the local network for the Subject.



4

(OPTIONAL) IF AUTO CONNECT DOES NOT WORK.

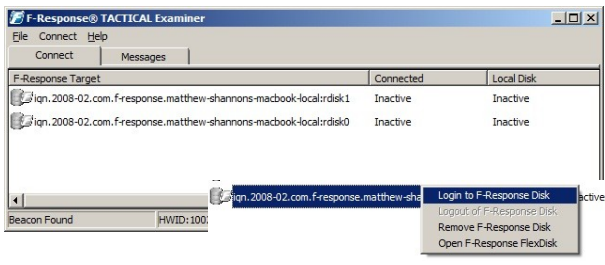
Select the File menu item "Manual Connect" and input the IP Address in the "Host IP Address" field on the TACTICAL Subject. See Above.



5

LOGIN TO THE PRESENTED DEVICES

Select one or more F-Response Targets, then right click and select "Login to F-Response Disk" to login to an F-Response Disk. Use the "Local Disk" column to identify the newly attached device on your computer. Optionally use the "Open F-Response Flexdisk™" to access the Flexdisk™ via the default web browser.

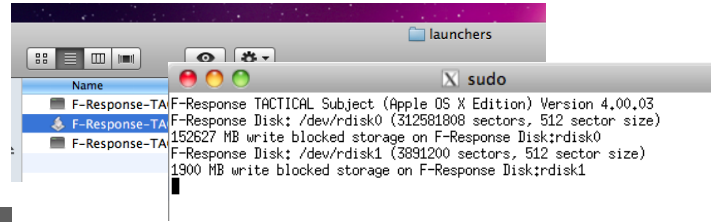
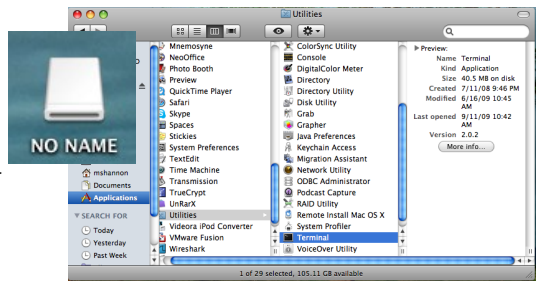


USING F-RESPONSE TACTICAL FOR APPLE OSX (LAUNCHER METHOD)

1

INSERT TACTICAL SUBJECT

Insert the F-Response TACTICAL Subject USB Dongle into the Suspect's Apple OSX Computer. Locate the newly created Removable Disk and open



2

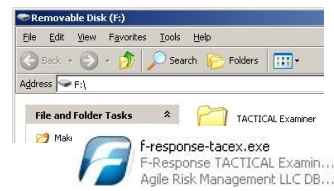
NAVIGATE TO THE LAUNCHERS FOLDER AND DOUBLE CLICK ON THE APPROPRIATE LAUNCHER

Inside the TACTICAL Subject folder is a launchers folder. Inside the launchers folder you will find launchers for F-Response TACTICAL for OSX, double click on the launcher to execute F-Response. You will be prompted for Administrative Access.

3

INSERT TACTICAL EXAMINER

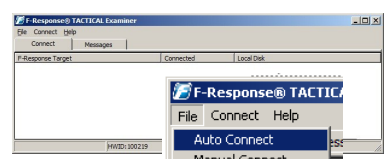
Insert the F-Response TACTICAL Examiner USB Dongle into the Analyst or Investigator's Windows Computer. Locate the newly created Removable Disk and double-click on the f-response-tacex.exe executable.



4

SELECT FILE "AUTO CONNECT"

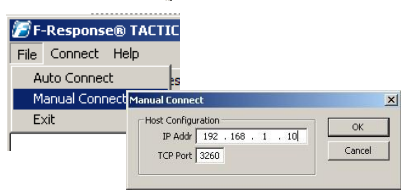
Select the File menu item "Auto Connect", this will tell the TACTICAL Examiner to begin searching the local network for the Subject.



4

(OPTIONAL) IF AUTO CONNECT DOES NOT WORK.

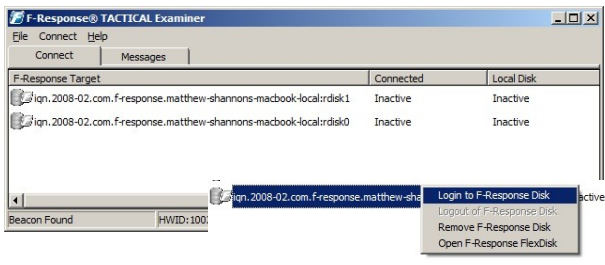
Select the File menu item "Manual Connect" and input the IP Address in the "Host IP Address" field on the TACTICAL Subject. See Above.



5

LOGIN TO THE PRESENTED DEVICES

Select one or more F-Response Targets, then right click and select "Login to F-Response Disk" to login to an F-Response Disk. Use the "Local Disk" column to identify the newly attached device on your computer. Optionally use the "Open F-Response Flexdisk™" to access the Flexdisk™ via the default web browser.





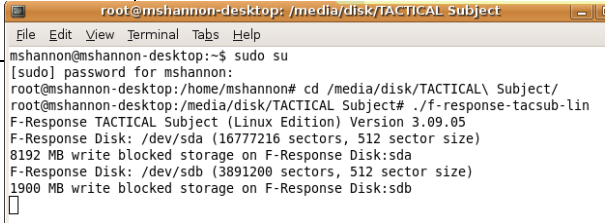
USING F-RESPONSE TACTICAL FOR LINUX (MANUAL METHOD)

1

INSERT TACTICAL SUBJECT

Insert the F-Response TACTICAL Subject USB Dongle into the Suspect's Linux Computer. Locate the newly created Removable Disk and open a Terminal Window.



2


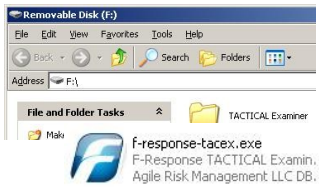
NAVIGATE TO THE USB STORAGE DEVICE AND EXECUTE THE PROGRAM

Navigate to the folder containing the F-Response TACTICAL Subject for Linux (f-response-tacs-sub-lin), in this instance that folder is /media/disk. Next execute the program as root or using sudo, (Root or account password will be required). The command line is "sudo ./f-response-tacs-sub-lin".

3

INSERT TACTICAL EXAMINER

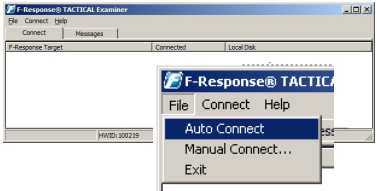
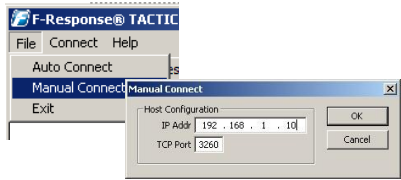
Insert the F-Response TACTICAL Examiner USB Dongle into the Analyst or Investigator's Windows Computer. Locate the newly created Removable Disk and double-click on the f-response-tacex.exe executable.

4

(OPTIONAL) IF AUTO CONNECT DOES NOT WORK.

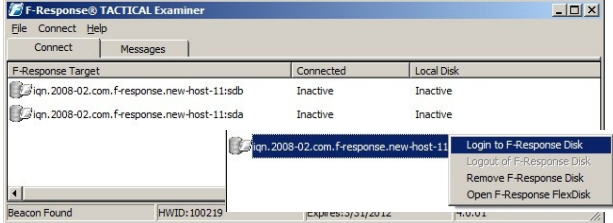
Select the File menu item "Manual Connect" and input the IP Address in the "Host IP Address" field on the TACTICAL Subject. See Above.

5

LOGIN TO THE PRESENTED DEVICES

Select one or more F-Response Targets, then right click and select "Login to F-Response Disk" to login to an F-Response Disk. Use the "Local Disk column to identify the newly attached device on your computer. Optionally use the "Open F-Response Flexdisk™ to access the Flexdisk™ via the default web browser.



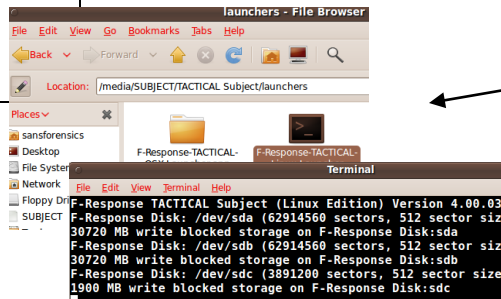
F-Response Target	Connected	Local Disk
iqn.2008-02.com.F-response.new-host-11:sdb	Inactive	Inactive
iqn.2008-02.com.F-response.new-host-11:sda	Inactive	Inactive
iqn.2008-02.com.F-response.new-host-11:	Inactive	Inactive

USING F-RESPONSE TACTICAL FOR LINUX (LAUNCHER METHOD)

1

INSERT TACTICAL SUBJECT

Insert the F-Response TACTICAL Subject USB Dongle into the Suspect's Linux Computer. Locate the newly created Removable Disk and open a Terminal Window.



2

NAVIGATE TO THE LAUNCHERS FOLDER AND DOUBLE CLICK ON THE APPROPRIATE LAUNCHER

Inside the TACTICAL Subject folder is a launchers folder. Inside the launchers folder you will find launchers for both the standard and 64bit versions of F-Response TACTICAL Subject for Linux. Double click on the appropriate launcher to execute TACTICAL.

3

INSERT TACTICAL EXAMINER

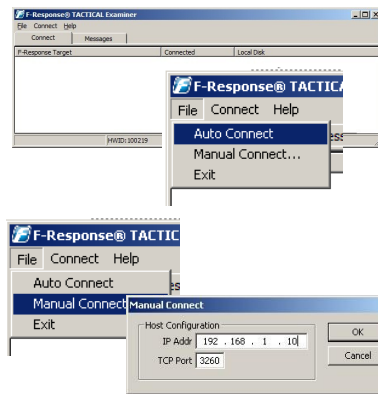
Insert the F-Response TACTICAL Examiner USB Dongle into the Analyst or Investigator's Windows Computer. Locate the newly created Removable Disk and double-click on the f-response-tacex.exe executable.



4

SELECT FILE "AUTO CONNECT"

Select the File menu item "Auto Connect", this will tell the TACTICAL Examiner to begin searching the local network for the Subject.



4

(OPTIONAL) IF AUTO CONNECT DOES NOT WORK.

Select the File menu item "Manual Connect" and input the IP Address in the "Host IP Address" field on the TACTICAL Subject. See Above.

5

LOGIN TO THE PRESENTED DEVICES

Select one or more F-Response Targets, then right click and select "Login to F-Response Disk" to login to an F-Response Disk. Use the "Local Disk" column to identify the newly attached device on your computer. Optionally use the "Open F-Response Flexdisk™ to access the Flexdisk™ via the default web browser.

